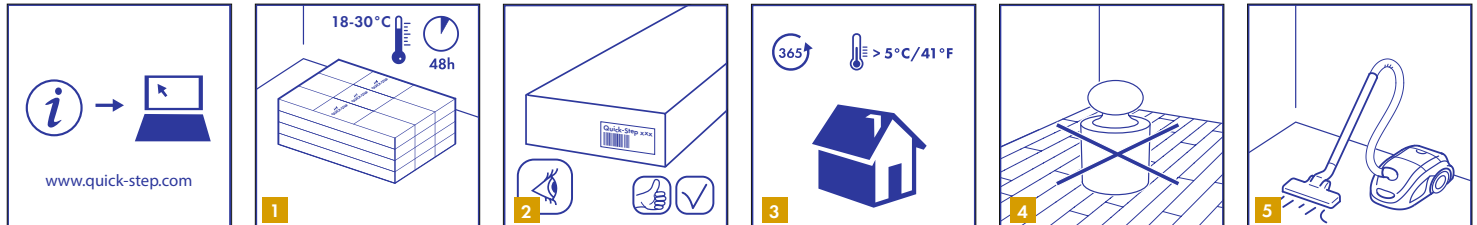


IN ORDER TO OBTAIN A GOOD RESULT, WE ADVISE TO FOLLOW ALL GIVEN INSTRUCTIONS CAREFULLY.



1. PREPARATION

1

Always store and transport Quick-Step rigid vinyl floors carefully to prevent distortions. Store and transport the boxes on a flat surface in neat stacks. Never store the boxes upright or in moist or in dusty rooms. Do not store the boxes in very cold ($<5^{\circ}\text{C}$) or very warm ($>35^{\circ}\text{C}$) or in humid places. Quick-Step rigid vinyl floors must be acclimatized in the room of installation between $18-30^{\circ}\text{C}$ ($64-86^{\circ}\text{F}$) for a period of at least 48 hours before installation. This floor- & roomtemperature needs to be maintained prior to, during and for at least 24 hours after the installation is completed. Installation must be performed between $18-30^{\circ}\text{C}$.

2

Quick-Step rigid vinyl floors can be bought in different formats, decors and qualities. Make sure you have received the correct flooring that you ordered before starting the installation. It is always a good idea to store the end labels together with your purchasing receipt.

3

Quick-Step rigid vinyl has been designed for indoor heated ($>5^{\circ}\text{C}$) (41°F) installations, preferably at normal room temperature ($=18-30^{\circ}\text{C}$). Quick-Step rigid vinyl cannot be installed in solariums, seasonal porches, camping trailers, boats or any other unheated application.

4

Never block the floor. If heavy/fixed objects (ex. kitchen, kitchen island, build-in cabinets, heavy stoves, electrical accumulators, and others) are on the floor, they act as a wall.

* Heavy objects should be installed first and not placed on top of the Quick-Step rigid vinyl floor.

* For heavy objects with radiant heat, it is recommended to install the stove/accumulator first on top of a protection plate, and install the Quick-Step rigid vinyl around the plate and respect the dilatation gaps.

The Quick-Step rigid vinyl floor must be able to move around the heavy objects to avoid open joints and separating planks. The dilatation gap size must be respected around all heavy/fixed objects. A floating installation should ALWAYS stay floating! If this is not possible, use our Quick-Step glue down vinyl.

5

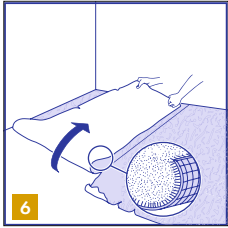
Make sure that the subfloor is dry, flat, stable, clean and free from grease and chemical substances. If needed, scrape off and clean up old adhesives. Prior to installation, carefully remove all debris (including nails), sweep and vacuum. Repair major surface imperfections and large cracks. It is recommended to remove old skirtings and to install new ones after the installation of the floor.

1. PREPARATION

2. INSTALLATION

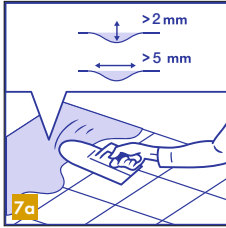
3. FINISHING

4. MAINTENANCE

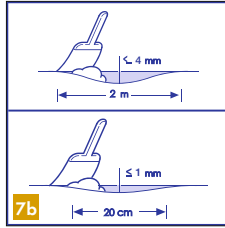


6

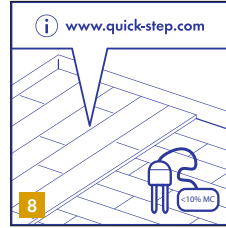
The type of subfloor, its quality and its preparation has a big influence on the final installation result. If the subfloor is not appropriate for the installation of Quick-Step rigid vinyl then necessary actions should be taken. Contact your Quick-Step vinyl dealer, who will be more than happy to help you. Be aware that unevenness in the subfloor may leave marks and can create gaps in your Quick-Step rigid vinyl floor. The subfloor should be stable and firmly fixed. Furthermore it cannot be soft, damaged or loose laid. Remove existing and /or too soft floorcoverings like carpet, needle felt, cushion vinyl.



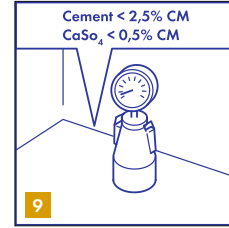
7a



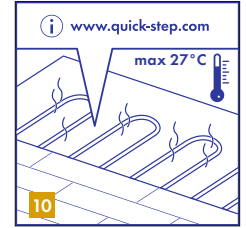
7b



8



9



10

7

Cement joints between tiles or other gaps of more than 2mm (0,08inch) in depth and 5mm (0,2inch) in width should be levelled. For Quick-Step rigid vinyl click floors: any unevenness of more than 1mm (0,04inch) over a length of 20cm (7,87inch) must be levelled out. The same applies to unevenness of more than 4mm (0,16inch) over a length of 2m (78,7inch). Bumps should be removed by sanding or scraping. If an appropriate levelling compound is required, check if a primer or sealer is needed. In most cases, the use of an underlay may help for levelling of the subfloor.

8

In case of installation on a wooden subfloor, please remove any existing floor covering first. No signs of mold and/or insect infestations should be present. If there is moist in the woodbased subfloor or there is no proper moisture barrier below the woodbased subfloor it has to be removed first. Reason is that the wood will rot after time because the moist is blocked by the new flooring and its underlay. Make sure the subfloor is level and nail or screw down any loose parts. Apply a suitable wooden floor panel, level floor, or use levelling compound on top for a perfect subfloor preparation. The levelling boards must be fixed with an appropriate glue or every 30cm with screws. An eventual crawl space under the plank floor must be sufficiently ventilated. Remove any obstacles and make sure there is sufficient ventilation (minimum 4 cm² total ventilation openings per m² of floor). The moisture content of the wood must not exceed 10%.

9

The moisture content of the subfloor must be less than 2,5%CM / 75%RH (cement screed) or less than 0,5%CM / 50%RH (anhydrite screed - subfloor). In the case of floor heating, results must be respectively 1,5%CM / 60%RH and 0,3%CM / 40%RH. Always measure, record and keep your moisture content results. A new cement screed floor must dry at least 1 week per 1cm (3/8") thickness up to 4cm (1-1/2"). Thicknesses over 4cm (1-1/2") require twice as much drying time. For example, a 6cm (2-1/2") concrete subfloor must dry at least 8 weeks.

10

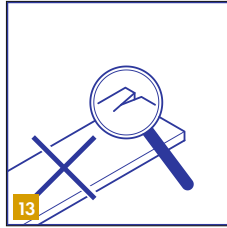
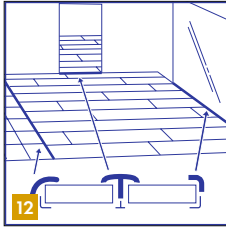
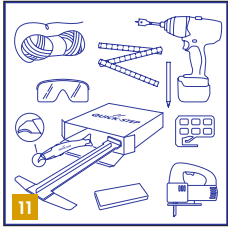
Floor heating systems (water / electricity) which are built-in the screed can be used with Quick-Step rigid vinyl floors if a constant room & floor temperature of minimum 18°C (64°F) can be guaranteed during acclimatization, installation and 48h after installation. For health and safety reasons and to avoid distortions with the Quick-Step rigid vinyl floor, a floor surface temperature of maximum 27°C (80°F) is allowed. A Quick-Step rigid vinyl floor cannot be installed on top of so called loose layed heating systems like electrical foils, etc. For a good preparation, read also the separate installation instructions for floor heating on www.Quick-Step.com

1. PREPARATION

2. INSTALLATION

3. FINISHING

4. MAINTENANCE



11

The following standard tools are needed: hammer, saw with blades for plastic (a jig-saw, hand circular saw, hand saw, or cross-cut saw), mouth mask (during sawing), measurer, safety glasses, thin rope, gloves and a pencil. Besides that, you also need the following accessories: Quick-Step INSTALLATION SET (a pull-bar, spacers and a tapping block suitable for the Uniclic® click system), Quick-Step Rigid underlay system and suitable maintenance products.

The use of accessories other than Quick-Step vinyl accessories (for example wrong underlay) may cause damage to your Quick-Step rigid vinyl floor. In such cases the guarantee provided by Quick-Step will be void. For this reason we advise to use only Quick-Step rigid vinyl accessories, which have been specially designed and tested for use with your Quick-Step rigid vinyl floor.

12

An expansion profile is needed in every door opening or when the maximum room size is exceeded.

- * For standard residential use (15-35°C), the maximum room size is 13mx13m.
- * For rooms with more extreme temperatures (5-65°C), the maximum room size is 8mx8m.
- * For rooms with HVAC-system (18-25°C), the maximum room size is 30mx30m.

A subfloor control joint can be covered with Quick-Step rigid vinyl click flooring. Building movement joints must be transposed to the Quick-Step rigid vinyl floor and a profile must be used.

13

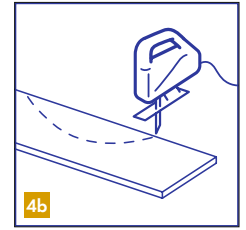
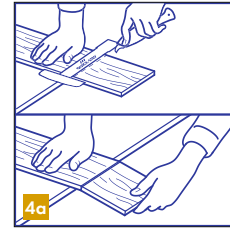
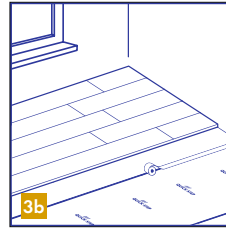
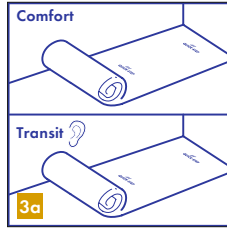
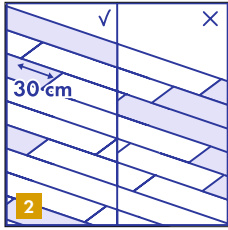
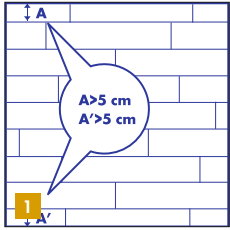
Check all panels before and during installation in optimal daylight conditions under the angle of light reflection. Defective panels must never be used. An installed plank is considered as accepted and cannot be claimed.

1. PREPARATION

2. INSTALLATION

3. FINISHING

4. MAINTENANCE



2. INSTALLATION

1

Before starting, carefully measure the length and the width of the room to plan a precise layout to achieve a balanced appearance of the floor. This is very important when installing typical tile decors. This will also ensure that you won't end up with the last row being too narrow. If the last row will be less than 5cm, the installation will be easier and better if you reduce the width of the planks of the first row.

2

During installation, make sure that you mix the floor panels (and floor boxes) sufficiently so that there are not too many identical, lighter or darker planks next to each other. To obtain the best visual effect, it is best to install the panels in the direction of the longest wall and/or parallel to the incidence of light. Ensure that the end joints of the panels in 2 successive rows are never in line, they should be staggered by at least 30cm (12inch). For a natural look and better mechanical strength, we do not recommend an installation of the planks in a pattern but rather at random formation.

3

It is recommended to install the first strip of underlay, parallel to the long side of the Quick-Step rigid vinyl floor and gradually add strips of underlay as you progress the floor installation. When installing the next line of underlay, it is recommended to connect the underlays using a thin adhesive tape to avoid overlapping. We strongly recommend to use the special Quick-Step rigid vinyl underlays. They have a noise-reducing and leveling function. The smooth top surface of the underlay makes installing the Quick-Step rigid vinyl panels easier and allows floor shrinkage and expansion afterwards. You can find more information about Quick-Step underlays and how to install them on the underlay packaging or at your dealer. A laminate or parquet underlay or a sticky vinyl underlay is not suitable for your Quick-Step rigid click vinyl floor. An underlay that is too soft and/or too thick and/or made from the wrong material, will damage your floor.

4

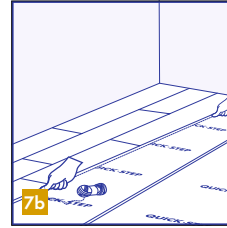
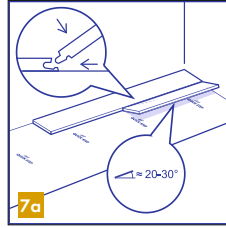
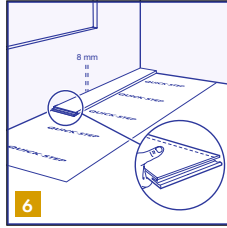
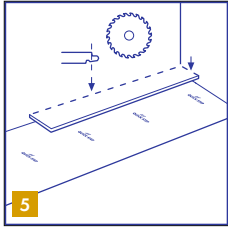
To shorten the length of the plank with a straight cut, you can cut the Quick-Step rigid vinyl floors with the decor side face up, using a special concave vinyl cutting knife. In order to cut the vinyl plank, draw a straight line along which you will be cutting, and use the knife to make a firm cut in the surface. You never need to completely cut through the vinyl. Then break off the plank using both hands. For any other cuts, you need to saw the planks. Depending on the type of saw, position your plank with the decor side face-up or face-down. Before making the actual cut, use a leftover piece to determine how the cleanest cut can be obtained (decor side face-up or face-down).

1. PREPARATION

2. INSTALLATION

3. FINISHING

4. MAINTENANCE



5

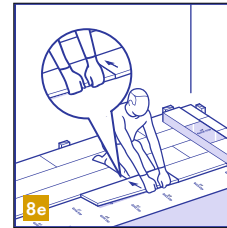
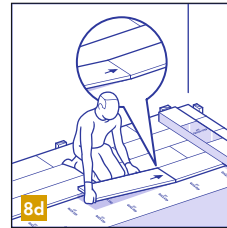
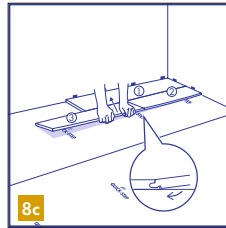
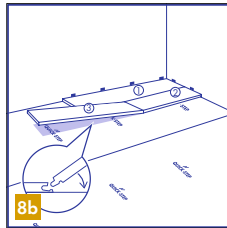
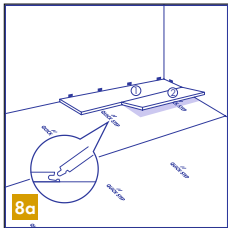
With Quick-Step rigid vinyl click panels you can choose where you want to start in the room. Think about what will be the easiest way to install the floor. We will demonstrate the installation of Quick-Step rigid vinyl floor for right-handed people, from right to left (from front viewpoint). Because of the Uniclic system, you can work in either direction.

6

Start with the first plank that will be installed in the corner. Remove the click profile on both the long and the short side of the plank by sawing. For other planks of the first row (not in the corner), remove the click profile on the long side that will be directly next to the wall. Any side of a plank that is directly next to a wall, must have its click profile removed, in order to ensure the required expansion gap.

7

In order to make the start of the installation easier, assemble the first 3 rows away from the wall, so you can sit on the planks during the assembly. Then slide the first 3 rows at the wanted position close to the wall with distance spacers in place. Take a thin rope and hold it alongside the installed planks to check and adjust the straightness of your installed first 3 rows. It is recommended to make additional checks of the straightness, in order to confirm the straightness during the installation. Remember to use the distance spacers for the expansion gap of 8mm (0,315 inch) along the perimeter.



8

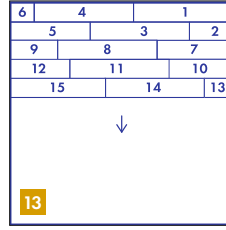
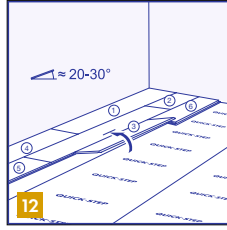
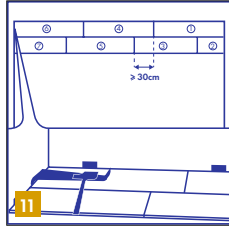
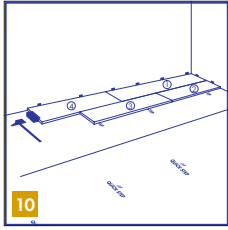
Uniclic® is unique because you can install the planks in two different ways. Method A (angle-angle): First, rotate the short side of the plank to be installed, into the short side of the already installed plank, by means of the angle principle. Then raise the newly installed plank to an angle of 20-30°. This will also raise the previously installed planks in the same row, because their short sides are already connected. Now place your BOTH hands close to the joint as shown in the figure and pull the long side of the plank towards you. The panels will now click together. You can either insert the tongue into the groove, or the groove on to the tongue. The tongue in groove method is the most common and easiest way.

1. PREPARATION

2. INSTALLATION

3. FINISHING

4. MAINTENANCE



10

Method B (taping): With Uniclic® you can also join the panels, by tapping the planks into each other, eliminating the need to lift them. This method requires the use of the special Uniclic® tapping block. The planks should not be joined with a single tap. To avoid damaging the panels you must tap them together gradually. You can angle the short or long side of the plank first and then tap to connect the other side.

11

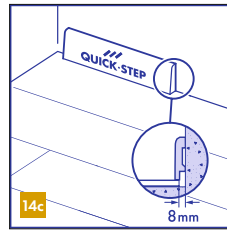
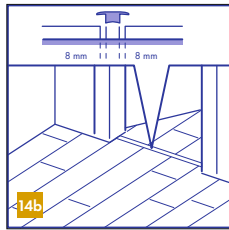
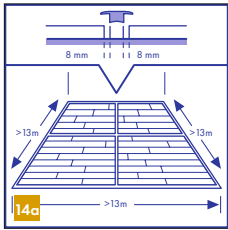
In places where it is too difficult to install the Uniclic® planks with the tapping block (e.g. against the wall), you can pull them together using the pull-bar and a hammer.

12

After the installation of each plank and before continuing with the next plank, check each short and long side joint to make sure there are no height differences and no openings.

13

Continue the installation like this - row by row - towards the end of the room. The easiest way to work is to sit on the already installed planks.



14

Room temperature varies continuously, so it is vital that the floor is able to expand and contract. For this reason, make sure you leave an expansion gap of 8 mm (5/16") on all sides of the floor, around pipes, thresholds and under door frames. Expansion gaps can be finished by means of a skirting that is attached to the walls. It is mandatory to leave an expansion gap between different rooms (e.g. under the door) and use a transition/expansion profile.

* For standard residential use (15-35°C), the maximum room size is 13mx13m.

* For rooms with more extreme temperatures (5-65°C), the maximum room size is 8mx8m.

* For rooms with HVAC-system (18-25°C), the maximum room size is 30mx30m.

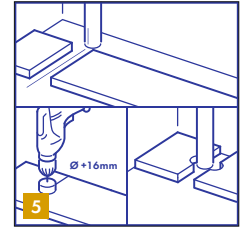
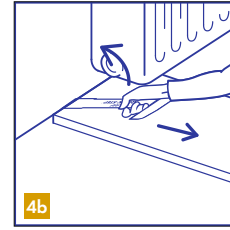
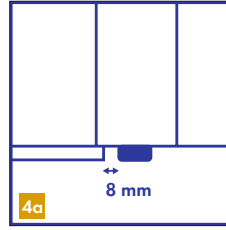
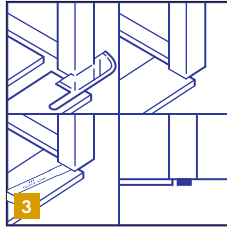
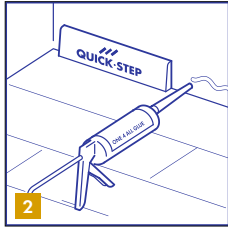
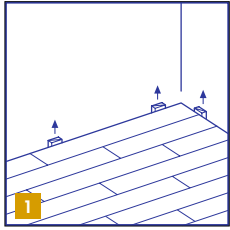
Larger rooms require additional expansion gaps and expansion profiles.

1. PREPARATION

2. INSTALLATION

3. FINISHING

4. MAINTENANCE



3. FINISHING

1

Remove all spacers.

2

Inspect the final surface of the installed floor. Install Quick-Step vinyl skirtings against the wall but never attach the skirting to the floor itself. This method allows the floor to expand and/or contract under the skirting-board.

Do not fill or cover the expansion joints with silicone or other kit.

3

When the new flooring meets a threshold or a doorway, we recommend undercutting the door frames or moldings. To secure the correct cut, turn a plank upside down with the underlay below, and place it on the floor up to the door frame. This ensures that the cut will be made at the correct height. Then place a hand saw flat against the plank and simply cut through the frame. Remove the cut out piece and vacuum away any debris.

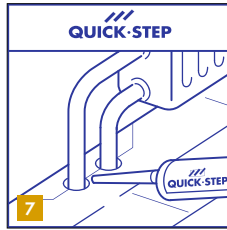
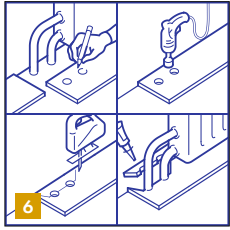
Install the plank on the long side, keeping the short side close to the undercut molding. Then slide the plank underneath the undercut towards the already installed plank in order to close the short end joint. Use the Quick-Step pull bar and/or tapping block to secure absolute tightness in the long and short joint.

4

When sawing the panels make sure that the expansion gap under the door is 8mm. If you cannot lift the panel (e.g. under radiators), use the tapping block or pull-bar to tap the planks together.

5

In rows where there is a pipe, make sure the pipe falls exactly in line with the short side of two planks. Take a drill bit with the same diameter as the pipe plus 16mm (0,63inch). Click the planks together on the short side and drill a hole centered on the joint between the two planks. Now you can install the planks.



3. FINISHING

6

In case of a double pipe, drill a hole at each of the marked points that is equivalent to the diameter of the pipes plus 16mm. If located on the long side of the plank, make a 45 degree cut from each hole to the edge of the plank.

7

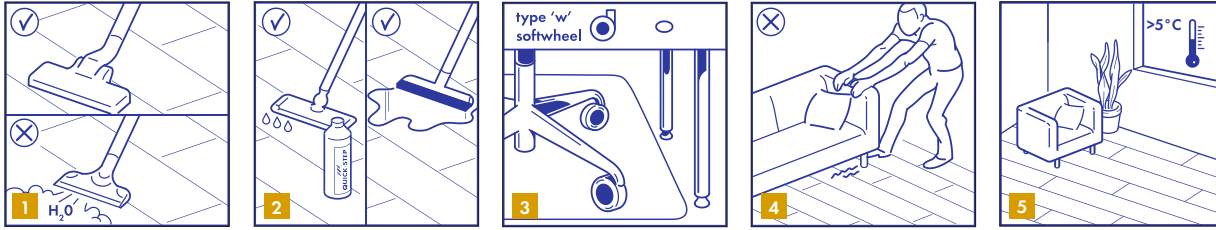
Then, using an appropriate PVC glue along the cut edges of the piece you cut out, glue the piece in place. Be sure no glue comes between the cut out piece and the subfloor. For a perfect finish around pipes, use the Quick-Step pipe covers.

1. PREPARATION

2. INSTALLATION

3. FINISHING

4. MAINTENANCE



4. MAINTENANCE

1

You can immediately walk on your new Quick-Step rigid vinyl floor after installation. It is allowed to use a vacuum cleaner with soft edges and soft wheels on your vinyl floor. The use of a steam cleaner is forbidden.

2

Your Quick-Step rigid vinyl floor can be cleaned with a damp or wet mop. Quick-Step Clean is a maintenance product specifically developed to keep your new vinyl floor in top condition. Never use natural soap detergents since this will leave a sticky film on the surface which will collect dust and dirt and will be difficult to remove. The same with cleaning agents containing abrasive particles, these might matt down the surface. It is always important not to overdose any cleaning agent, as this will lead to a build up of cured cleaning agent which is difficult to remove without using a vinyl stripper.

For further information on how to clean and maintain your floor, please visit www.Quick-Step.com. For specific cleaning instructions in commercial applications or projects, you can contact the Quick-Step technical department.

Always remove spilled liquids from the floor immediately.

3

Protect furniture and chair legs. Use (office) chairs type W and seats with soft wheels that are suitable for a vinyl floor and/or use a suitable desk mat.

4

Never drag heavy items or furniture over the floor, but lift them up. Make sure furniture legs have a large floor surface and are provided with non-staining floor protectors. The taller and/or wider the furniture feet are, the better the weight distribution on the floor will be, and the less chance there is to damage the floor. Place non-rubber backed mats at all outside entrances to prevent dirt, grit and soil from being transferred onto your floor. This will reduce damages, the maintenance requirement and extend the life of your floor. Please note that prolonged contact with some rubber types can cause a permanent stain.

Do not allow cigarettes, matches or other very hot items to contact the floor as this may cause permanent damage.

5

Ensure that the indoor climate conditions are always kept $> 5^{\circ}\text{C}$ (41°F) and preferably between $18 - 30^{\circ}\text{C}$ ($64 - 86^{\circ}\text{F}$). It is also important to keep the subfloor in the temperature range mentioned above.